

Digidesign ASIO Driver Usage Guide

Version 7.0 for Pro Tools|HD® and Pro Tools LE™ Systems on Windows XP Only

Introduction


The Digidesign ASIO Driver is a single-client, multichannel sound driver that allows third-party audio programs that support the ASIO Driver standard to record and play back through the following Digidesign hardware:


- Pro Tools|HD audio interfaces
- Digi 002®
- Digi 002 Rack™
- Mbox 2™
- Mbox™


Full-duplex playback of 24- and 16-bit audio are supported at sample rates up to 48 kHz, depending on your Digidesign hardware and ASIO client application.

The Digidesign ASIO Driver provides the following numbers of input and output channels:

- Up to 8 channels of input and output with Pro Tools|HD systems
- Up to 18 channels of input and output with Digi 002 and Digi 002 Rack
- Up to 4 channels of input and 2 channels of output with Mbox 2
- Up to 2 channels of input and output with Mbox

 *The ASIO Driver is not multi-client. Only one application at a time can use the ASIO Driver. Be sure to disable the Windows system sounds. It is also recommended that you use a separate sound card for games or other general work.*

 *The ASIO Driver cannot be used if another application on the system is sending audio to Digidesign hardware through the Digidesign Wavedriver. If your system has both the Wavedriver and ASIO Driver installed be sure to disable Windows system sounds. It is also recommended that you use a separate sound card for games or other general work.*

 *Check the Digidesign Web site (www.digidesign.com) for the latest third-party drivers for Pro Tools hardware, as well as current known issues.*


Compatibility

This version of the Digidesign ASIO Driver can be used on Digidesign-qualified Pro Tools systems running on a Digidesign-qualified version of Windows XP.

Digidesign can only assure compatibility and provide support for hardware and software it has tested and approved. For a list of Digidesign hardware systems, Digidesign-qualified computers, operating systems, and devices, and Digidesign-qualified third-party ASIO-compatible programs, refer to the compatibility page of the Digidesign Web site (www.digidesign.com/compato).


Installing the ASIO Driver

Digidesign ASIO Driver is automatically installed when you install Pro Tools (it is a separate option in the Pro Tools installer, but it is selected for installation by default).

 *For complete instructions on installing Pro Tools, see the Getting Started Guide for your Pro Tools system.*

Standalone Digidesign Audio Drivers (ASIO Driver and WaveDriver)

To use the Digidesign ASIO Driver without Pro Tools, use its standalone version, which is part of the Digidesign Audio Drivers installer that is available on the Digidesign Web site (www.digidesign.com). The Digidesign Audio Drivers installer includes the standalone versions of the Digidesign ASIO Driver and Digidesign WaveDriver.

 *If a previous version of either driver is already installed on your system, the Digidesign Audio Drivers installer will automatically overwrite the previous version of the driver.*

To install the standalone versions of the Digidesign ASIO Driver and Digidesign WaveDriver:

- 1 From the Digidesign Web site, download the Digidesign Audio Drivers installer.
- 2 Locate the downloaded installer files and double-click Digidesign Audio Drivers Setup.exe.
- 3 Follow the on-screen instructions to install the standalone drivers.
- 4 When the installation is complete, quit the installer and restart your computer.

Removing the Digidesign Audio Drivers

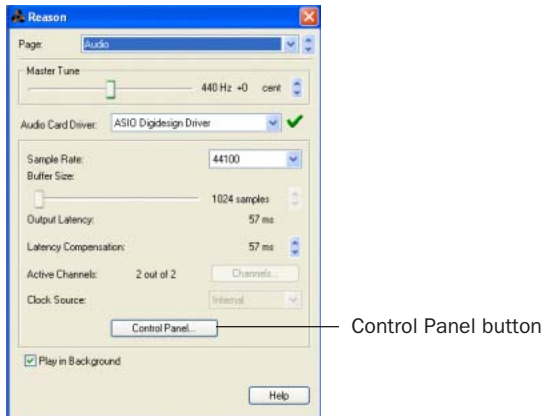
If you need to remove the Digidesign Audio Drivers (ASIO Driver and WaveDriver) from your computer, complete the following steps.

To remove the Digidesign Audio Drivers:

- 1 Click Start.
- 2 Click Control Panel.
- 3 Double-click Add or Remove Programs.
- 4 From the Currently installed programs list, select Digidesign Audio Drivers 7.0.
- 5 Click the Change/Remove button.
- 6 Choose the Modify button.
- 7 Click Next.
- 8 Uncheck the Digidesign Audio Drivers box.
- 9 Click Next.
- 10 When removal is complete, close the Add or Remove Programs window.

Configuring ASIO Driver Settings

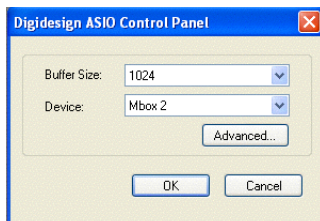
Configuring ASIO Driver settings is done in your third party ASIO program. See your program's documentation. For example, with Propellerhead Reason, click the Control Panel button.



Setup Example, using Propellerhead Reason

ASIO Driver Control Panel

From the ASIO Driver Control Panel, you can configure the ASIO Driver for your Pro Tools system.



Digidesign ASIO Control Panel

The Digidesign ASIO Driver Control Panel cannot be accessed under the following circumstances:

- When Pro Tools is running.
- When playing or recording in an audio program that does not support the ASIO Driver.
- When using a third-party audio program that has an option to keep the ASIO Driver open even when you are not playing or recording. (You must close the audio program before you can open the ASIO Driver Control Panel.)

Buffer Size

You may select from the following buffer sizes (depending on your Digidesign hardware):

- 128 samples
 - 256 samples
 - 512 samples
 - 1024 samples
 - 2048 samples
- ♦ Small buffers have the advantage of low latency in the record monitor path. (Latency is the time delay between a signal entering the audio inputs and leaving the outputs during recording.)
- ♦ Larger buffers have the advantage of making the Digidesign ASIO Driver more immune to audio dropouts during playback and recording.

In some ASIO-compatible audio programs, performing various tasks will interrupt the ASIO Driver and may result in clicks and pops in audio playback or recording. Choosing medium or large buffers (such as 256, 512, or 1024) can help alleviate this problem.

Changing the Buffer Size for the Digidesign ASIO Driver does not affect the H/W Buffer Size settings in the Pro Tools Playback Engine dialog.

Device

The Device Type will always be set to your installed Pro Tools hardware.

Advanced Button

The Advanced button opens the Hardware Setup dialog for the Digidesign hardware that you are using. Refer to the *Getting Started Guide* for your Digidesign hardware.

Copyright

© 2005 Digidesign, a division of Avid Technology, Inc. All rights reserved. This guide may not be duplicated in whole or in part without the express written consent of Digidesign.

Avid, Digidesign, and Pro Tools are either trademarks or registered trademarks of Avid Technology, Inc. in the US and other countries. All other trademarks contained herein are the property of their respective owners.

Product features, specifications, system requirements, and availability are subject to change without notice.

PN 9329-17763-00 REV B 12/05